

Contents

[Copyright/License/Warranty](#)

[Introduction](#)

[Saver Styles](#)

[Common Questions](#)

[Production Team](#)

[Ordering Information](#)

[Index](#)

Copyright/License/Warranty

Visual FX Saver® Copyright © 1994-95 by Visual FX Software, Inc.
All rights reserved.

License Agreement

You should carefully read the following terms and conditions before using this software.

Shareware Version

You are hereby licensed to: use the Shareware Version of the software for a 21 day evaluation period; make as many copies of the Shareware version of this software and documentation as you wish; give exact copies of the original Shareware version to anyone; and distribute the Shareware version of the software and documentation in its unmodified form via electronic means. There is no charge for any of the above.

You are specifically prohibited from charging, or requesting donations, for any such copies, however made; and from distributing the software and/or documentation with other products (commercial or otherwise) without prior written permission, of the author.

Unregistered use of Visual FX Saver after the 21-day evaluation period is in violation of federal copyright laws.

Evaluation and Registration

This is not free software. This license allows you to use this software for evaluation purposes without charge for a period of 21 days. If you use this software after the 21 day evaluation period a registration fee of \$20 is required.

One registered copy of Visual FX Saver may either be used by a single person who uses the software personally on one or more computers, or installed on a single workstation used nonsimultaneously by multiple people, but not both.

Governing Law

This agreement shall be governed by the laws of the State of New York.

Disclaimer of Warranty

THIS SOFTWARE AND THE ACCOMPANYING FILES ARE SOLD 'AS IS' AND WITHOUT WARRANTIES AS TO PERFORMANCE OF MERCHANTABILITY OR ANY OTHER WARRANTIES WHETHER EXPRESSED OR IMPLIED.

Because of the various hardware and software environments into which Visual FX Saver may be put, NO WARRANTY OF FITNESS FOR A PARTICULAR PURPOSE IS OFFERED.

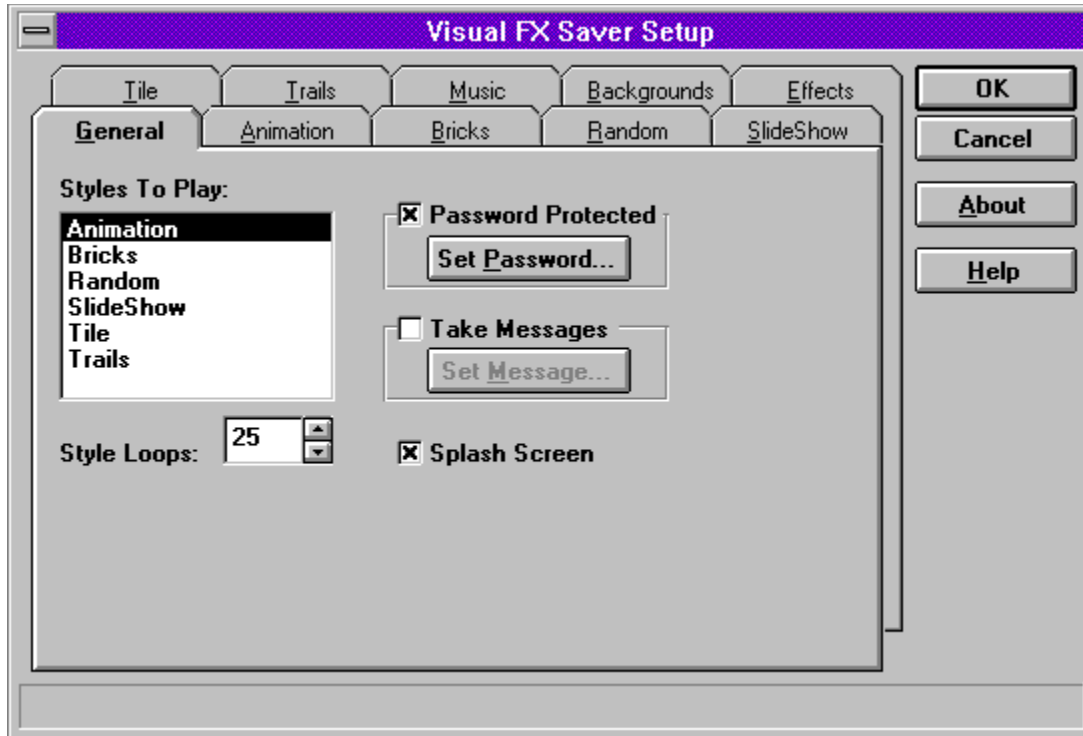
Good data processing procedure dictates that any program be thoroughly tested with non-critical data before relying on it. The user must assume the entire risk of using the program. ANY

LIABILITY OF THE SELLER WILL BE LIMITED
EXCLUSIVELY TO PRODUCT REPLACEMENT OR REFUND OF PURCHASE PRICE.

Introduction

Welcome to the Visual FX Screen Saver

Click on the screen elements below to learn more on how to use the [Visual FX Screen Saver Setup](#).



The General tab allows you to select which Styles To Play, Style Loops, Password Protection, Take Messages, and Splash Screen.

Click on the list of Styles To Play to select which Styles will be chosen from for your screen saving session.

For example: if you chose Bricks and Random, the first time the screen saver runs it will use the Bricks style. Then the screen saver will use the Random style.

For every Style you select you must set its settings.

Click on the up or down arrows in the Style Loops number box to set the number of times each style will play.

Check the Password Protected check box to password protect your screen saving session. You must Set Password.

Check the Take Messages check box to show a message taker screen when your screen saving session is interrupted. Use the 'Set Message' button to set the greeting.

Check the Splash Screen check box to show the Splash Screen before the start of every screen save session.

Saver Styles

[Animation](#)

[Bricks](#)

[Random](#)

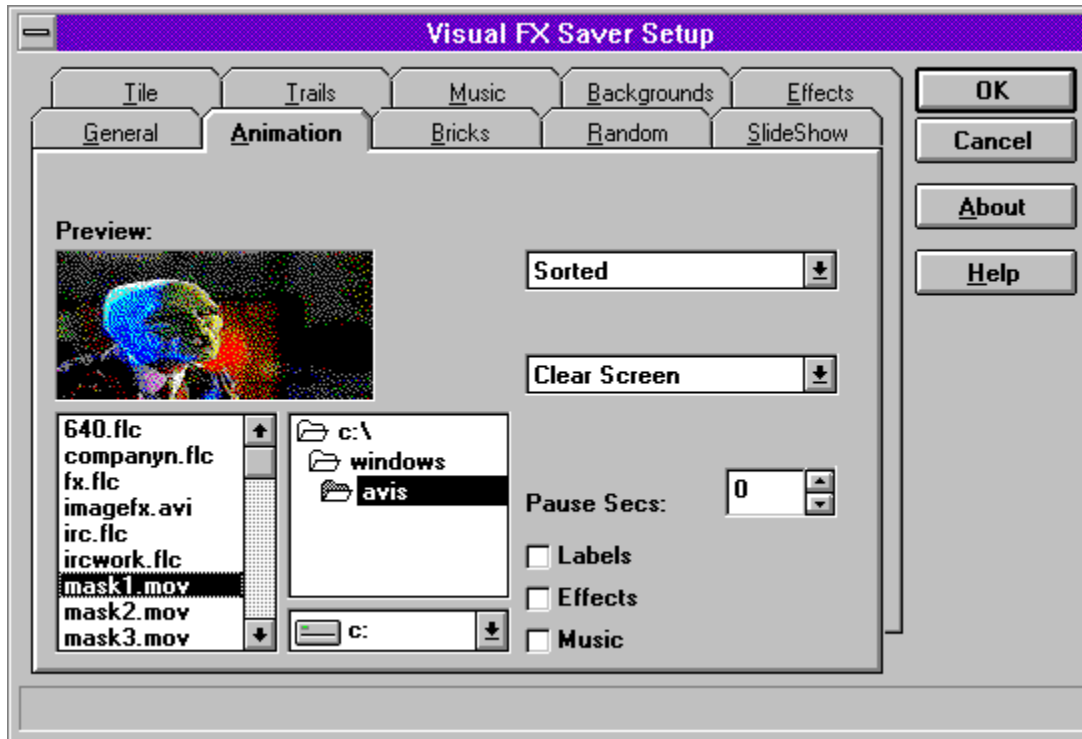
[SlideShow](#)

[Tile](#)

[Trails](#)

Animation

Click on the screen elements below to learn more on how to use the [Animation](#) dialog.



The Preview area will attempt to display the selected animation file in a small window. Flc files will not be compressed into the window. You must click on a file to set this option.

The 'Single/Random/Sorted' dropdown box lets you decide how to play your selected animation. 'Single' will play the selected file. 'Random' and 'Sorted' will play all the animations in the selected directory. If you choose a 'Flc' file the animations played will be 'Flc', 'Fli', and 'Aas'. If you choose an 'Avi' or 'Mov' file the animations played will be 'Avi' and 'Mov'.

Warning: you must provide your own runtimes to play 'Avi' and 'Mov' files. The Video For Windows runtime is available in the Microsoft Multimedia Forum on Compuserve and the Quicktime runtime is available in the Apple QuickTime Forum.

The Capture Screen/Clear Screen/Show Backgrounds dropdown box lets you decide what your animation is displayed on.

The Pause Secs area will let you set how long a delay before the next Animation is shown.

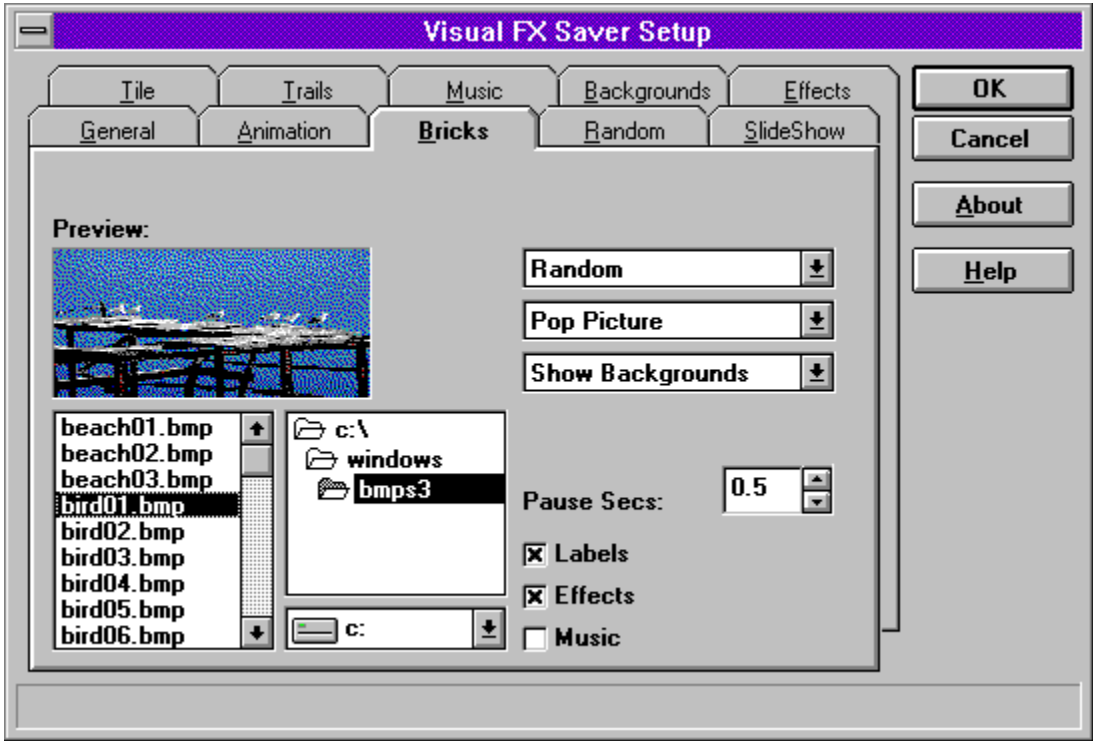
The Labels check box will let you show the name of the animation at the bottom of the screen.

The Effects check box will let you show a transition before the beginning of the playing of your animation. This option is only available for 'Avi' and 'Mov' files.

The Music check box will let you enable or disable music playing during your animation playing. Not recommended for animations that contain sound.

Bricks

Click on the screen elements below to learn more on how to use the [Bricks](#) dialog.



This style displays bmp, gif, pcx, tga, tif, wmf, eps, jpg, cmp, cal, img, mac, msp, pcd, pct, ras, wpg files.

Bricks starts from the bottom of the screen and tiles images towards the top.

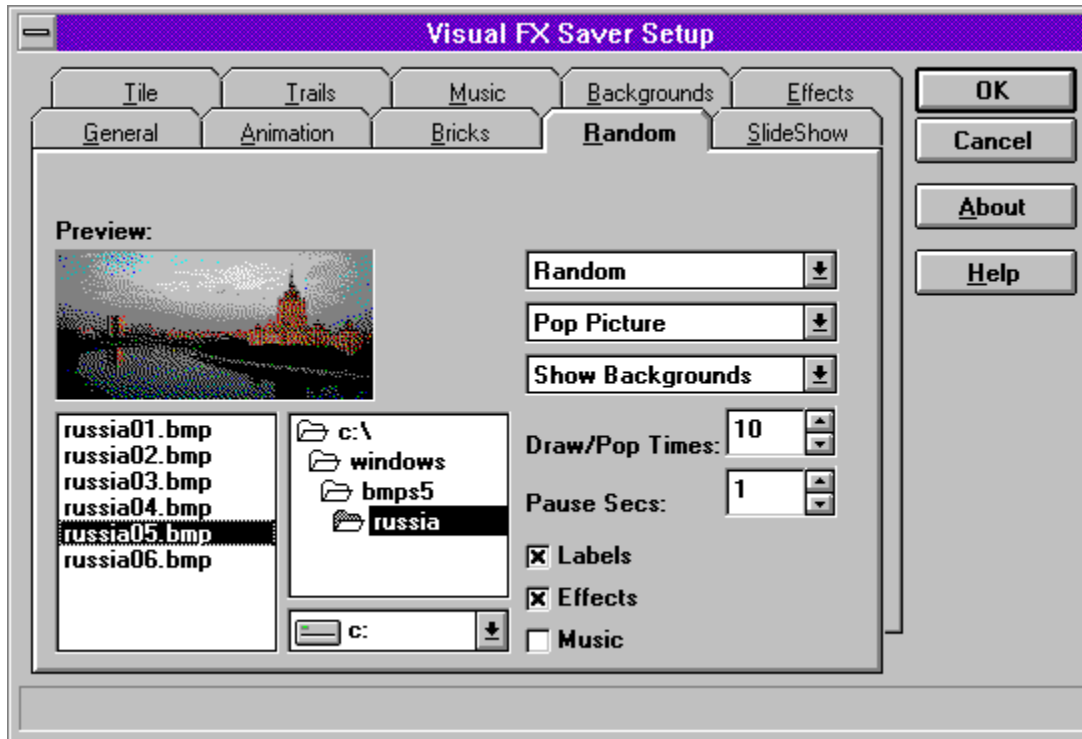
The Preview area will attempt to display the selected image file in a small window. You must click on a file to set this option.

The Draw Picture/Pop Picture dropdown box lets you choose the manner in which the image is drawn on the screen.

The Draw/Pop Times area lets you set how many times the image is drawn.

Random

Click on the screen elements below to learn more on how to use the [Random](#) dialog.



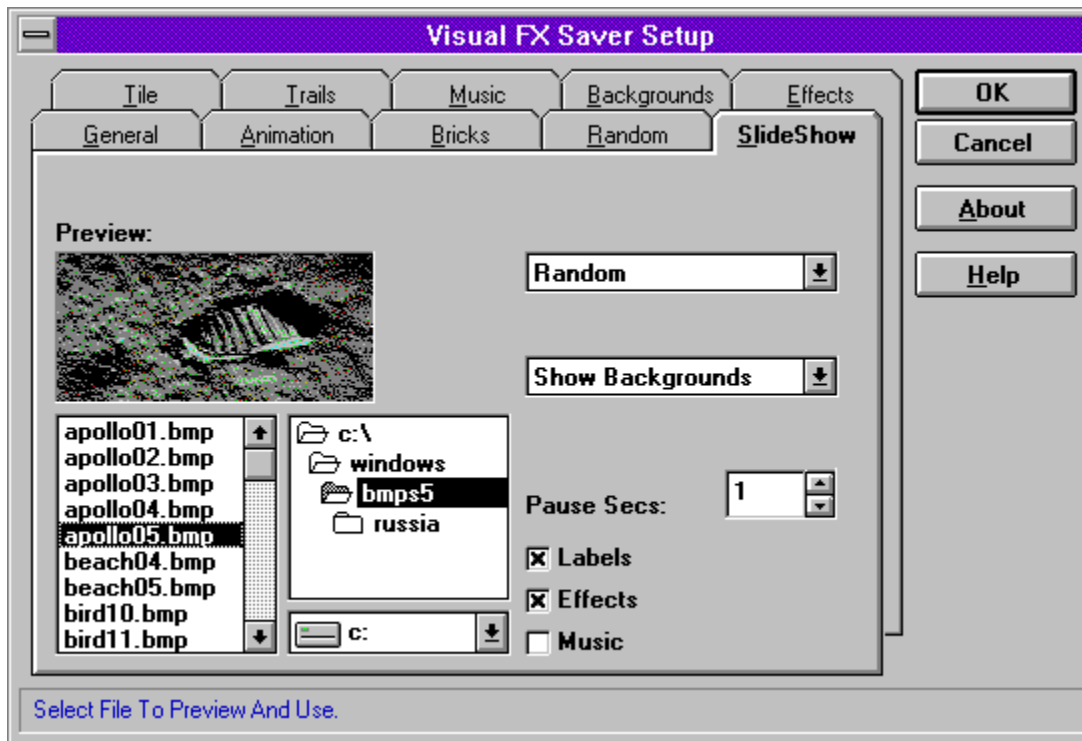
The Random style will take a selection of bmp, gif, pcx, tga, tif, wmf, eps, jpg, cmp, cal, img, mac, msp, pcd, pct, ras, wpg files and display them multiple times randomly on the screen.

The 'Draw Picture/Pop Picture' dropdown box lets you choose the manner in which the image is drawn on the screen.

The 'Draw/Pop Times' area lets you set how many times the image is drawn.

Slide Show

Click on the screen elements below to learn more on how to use the Slide Show dialog.



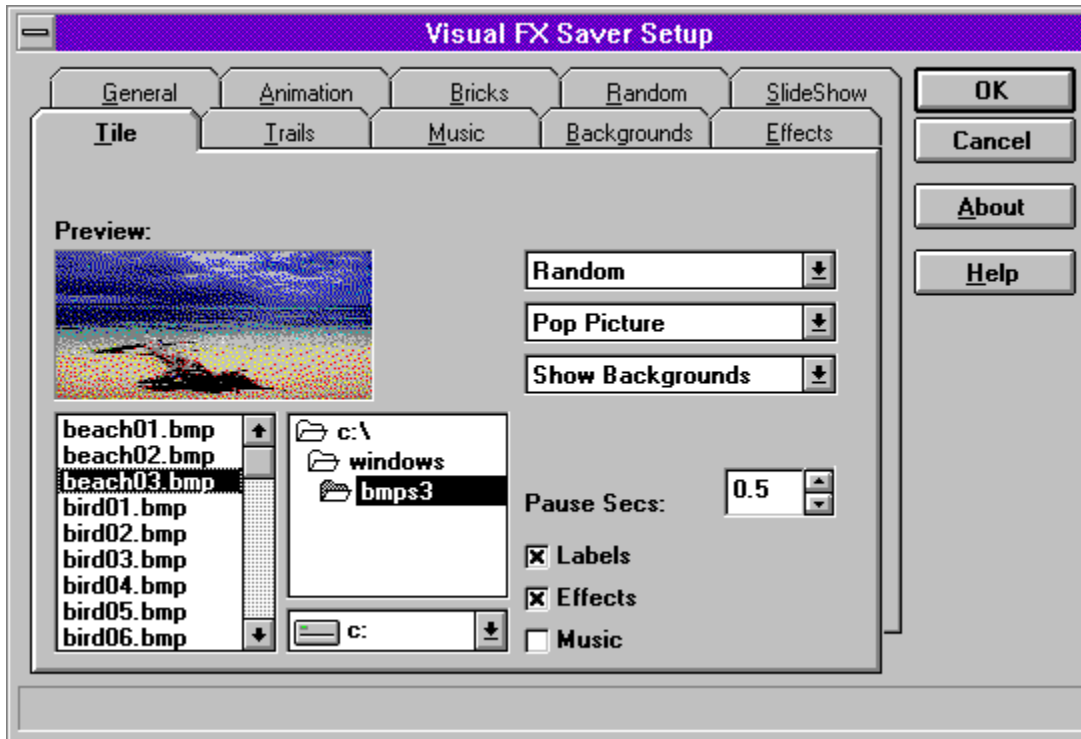
The SlideShow style will take a selection of bmp, gif, pcx, tga, tif, wmf, eps, jpg, cmp, cal, img, mac, msp, pcd, pct, ras, wpg files and display them in the center of the screen.

The 'Draw Picture/Pop Picture' dropdown box lets you choose the manner in which the image is drawn on the screen.

The 'Draw/Pop Times' area lets you set how many times the image is drawn.

Tile

Click on the screen elements below to learn more on how to use the [Tile](#) dialog.



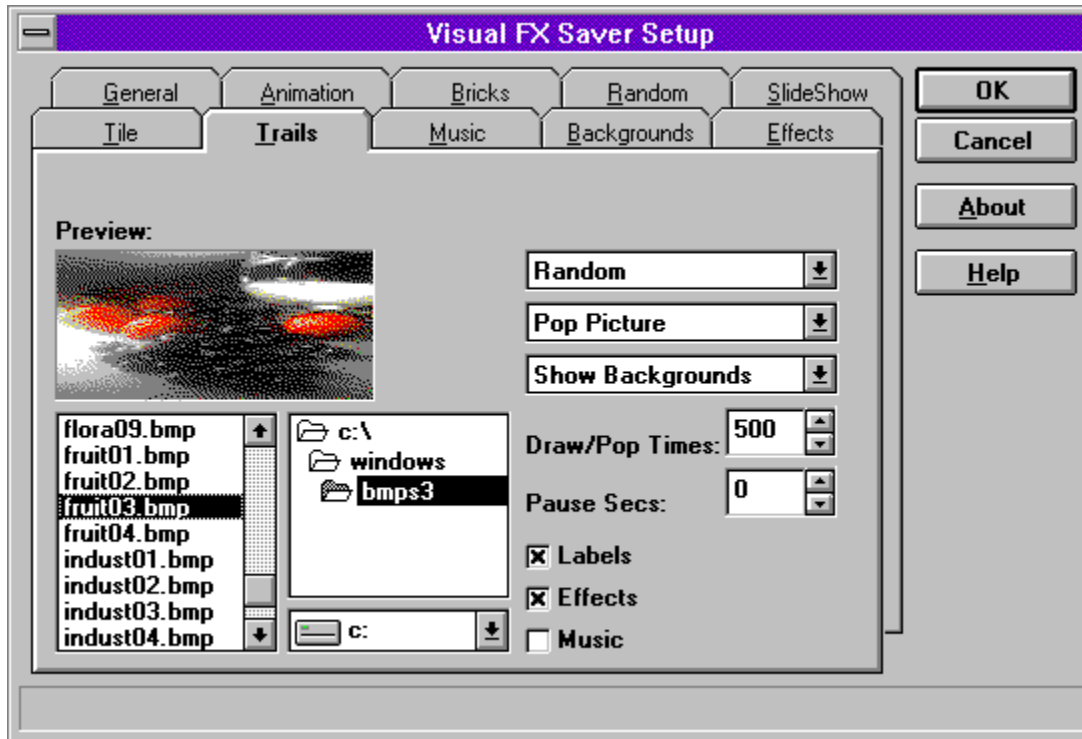
The Tile style will take a selection of bmp, gif, pcx, tga, tif, wmf, eps, jpg, cmp, cal, img, mac, msp, pcd, pct, ras, wpg files and display them multiple times starting at the top of the screen and ending at the bottom.

The 'Draw Picture/Pop Picture' dropdown box lets you choose the manner in which the image is drawn on the screen.

The 'Draw/Pop Times' area lets you set how many times the image is drawn.

Trails

Click on the screen elements below to learn more on how to use the [Trails](#) dialog.



The Trails style will take a selection of bmp, gif, pcx, tga, tif, wmf, eps, jpg, cmp, cal, img, mac, msp, pcd, pct, ras, wpg files and display them multiple times starting at the top corner of the screen and run in diagonals bouncing around the screen.

The 'Draw Picture/Pop Picture' dropdown box lets you choose the manner in which the image is drawn on the screen.

The 'Draw/Pop Times' area lets you set how many times the image is drawn.

Common Questions

Why does the background look all funny when I display an image on top of it?

Answer:

Palette Shifts! If you're using a 256 color display then there is no way to display two 256 color images at the same time without one of them taking on the colors of another. Suggestion: High Color boards are now selling for \$100!

Production Team

[Visual FX Software, Inc.](#)

[Acknowledgements](#)



Visual FX Software, Inc. creates quality custom multimedia solutions.

Products include:

- MusicCom/EDrive - [The GO EDRIVE Movie Viewer](#)
- DISCUS Distribution Services, Inc. - [FanTaSee screen savers](#)
- Digital Video Productions - [Screen Strippers](#)
- [Poker Party](#)
- Creative Minds - [Movie screen savers](#)
- [Image/sayings screen savers](#)
- Visual FX Software Inc. - [Screen Saver Engine](#)
- [Visual FX Screen Saver](#)

Acknowledgements

FXTools/VB Professional Edition - Copyright (c) ImageFX

Autodesk Animation Player for Windows - Copyright (c) Autodesk, Inc.

VBCTL3D - Copyright (c) Beekes/Simms

Visual Help - Copyright (c) WinWare

3D Widgets and Designer Widgets - Copyright (c) Sheridan Software Systems

Ordering Information

[Ordering by Mail](#)

[Ordering through CompuServe](#)

[Ordering by phone "Credit Card Orders"](#)

[What you receive...](#)

[Product support](#)

Ordering By Mail

(To print the following, select Print Topic from the File menu)

Please register my copy of Visual FX Saver. I am sending a check or money order for the amount of \$20.00.

Name:

Company:

Address1:

Address2:

City:

State:

Zip:

Country:

Tel:

Fax:

Email:

Single-User Registration

Single user\$20.00

Amount enclosed

Make checks payable to: Tim Hitchings

Send completed form with payment to

Visual FX Software, Inc.
32 North Woodhull Road.
Huntington, NY 11743

Where did you here about Visual FX Saver?

Notes

Ordering Through CompuServe

To register through CompuServe, you need to have a CompuServe account.

- Log on to Compuserve
- At any prompt type "GO SWREG"
- Select registration Id# "3566".

The registration fee will be billed to your CompuServe account.

Ordering By Phone "Credit Card Orders"

You can order with MC, Visa, Amex, or Discover from Public Software Library by calling:

· 800-2424-PSL

or

· 713-524-6394

or by FAX at

· 713-524-6398

or by CIS Email to 71355,470.

You can also mail credit card orders to:

PsL
P.O.Box 35705
Houston, TX 77235-5705.

Make sure to specify "Visual FX Saver" order #11618, \$20.00 will be billed to your credit card. If you order by mail or Fax be sure to include the expiration date of your credit card and the name as it appears on the credit card.

THE ABOVE NUMBERS ARE FOR ORDERS ONLY. Any questions about the status of the shipment of the order, registration options, product details, technical support, volume discounts, dealer pricing, site licenses, etc, must be directed to Visual FX Software at the address below or CIS Email 73637,66.

Questions, Support, and site licenses contact

Visual FX Software, Inc.
32 North Woodhull Road
Huntington, NY 11743

or

CompuServe 73637,66
timh@panix.com

What You Receive...

If ordering via CompuServe:

an e-mail file containing a license file.

If ordering via Mail or Credit Card:

Latest Version of Visual FX Saver
License File

Ongoing product support

Through CompuServe. (CIS ID # 73637,66)
Through Internet. (timh@panix.com)

New releases

Notification of new releases.

Minimal charges for upgrades.

Product Support

Product Support for Visual FX Saver is available through the following channels. Please include the version of Visual FX Saver you are using and your system configuration.

Please direct questions to:

Tim Hitchings (Visual FX Saver Tech Support)

CompuServe: 73637,66

Internet: timh@panix.com

Index

- [≡](#)
- <#>
- [A](#)
- [B](#)
- [C](#)
- [D](#)
- [E](#)
- [F](#)
- [G](#)
- [H](#)
- [I](#)
- [J](#)
- [K](#)
- [L](#)
- [M](#)
- [N](#)
- [O](#)
- [P](#)
- [Q](#)
- [R](#)
- [S](#)
- [T](#)
- [U](#)
- [V](#)
- [W](#)
- [X](#)
- [Y](#)
- [Z](#)

A

[About](#)

[About](#)

[Acknowledgements](#)

[Acknowledgements](#)

[Add](#)

[Add](#)

[Animation](#)

[Animation](#)

B

[Backgrounds](#)

[Backgrounds](#)

[Bricks](#)

[Bricks](#)

C

[Cancel](#)

[Cancel](#)

[Common Questions](#)

[Common Questions](#)

[Contents](#)

[Contents](#)

[Copyright License Warranty](#)

[CopyrightLicenseWarranty](#)

D

[Draw Pop Times](#)

[Draw Pop](#)

[DrawPop](#)

[DrawPopTimes](#)

E

[Effects Check](#)

[Effects Delay](#)

[Effects Demo](#)

[Effects List](#)

[Effects](#)

[Effects](#)

[EffectsCheck](#)

[EffectsDelay](#)

[EffectsDemo](#)

[EffectsList](#)

F

[File Names](#)

[File Names](#)

H

[Help](#)

[Help](#)

I

[Index](#)

[Index](#)

[Introduction](#)

[Introduction](#)

L

[Labels](#)

[Labels](#)

[Leave A Message](#)

[LeaveAMessage](#)

M

[Message Cancel](#)

Message End Screen Saver

Message List

Message Ok

Message Panel

Message Panel

Message Text

MessageCancel

MessageEndScreenSaver

MessageList

MessageOk

MessageText

Music Check

Music

Music

MusicCheck

N

New Password

NewPassword

O

Ok

Ok

Old Password

OldPassword

Order

Order

Ordering By Mail

Ordering By Phone

Ordering Information

Ordering Through CompuServe

OrderingByMail

OrderingByPhone

OrderingInformation

OrderingThroughCompuServe

P

Password Cancel

Password Ok

Password Protected

Password Protected

PasswordCancel

PasswordOk

Pause Seconds

PauseSecs

[Preview](#)

[Preview](#)

[Product Support](#)

[Production Team](#)

[Production Team](#)

[ProductSupport](#)

R

[Random](#)

[Random](#)

[Retype New Password](#)

[RetypeNewPassword](#)

S

[Saver Styles](#)

[SaverStyles](#)

[Screen](#)

[Screen](#)

[SlideShow](#)

[SlideShow](#)

[Splash Screen](#)

[SplashScreen](#)

[Style Loops](#)

[StyleLoops](#)

[Styles](#)

[Styles](#)

T

[Take Messages](#)

[TakeMessages](#)

[Tile](#)

[Tile](#)

[Trails](#)

[Trails](#)

V

[Visual FX Software Inc.](#)

[Visual FX Software](#)

W

[What You Receive](#)

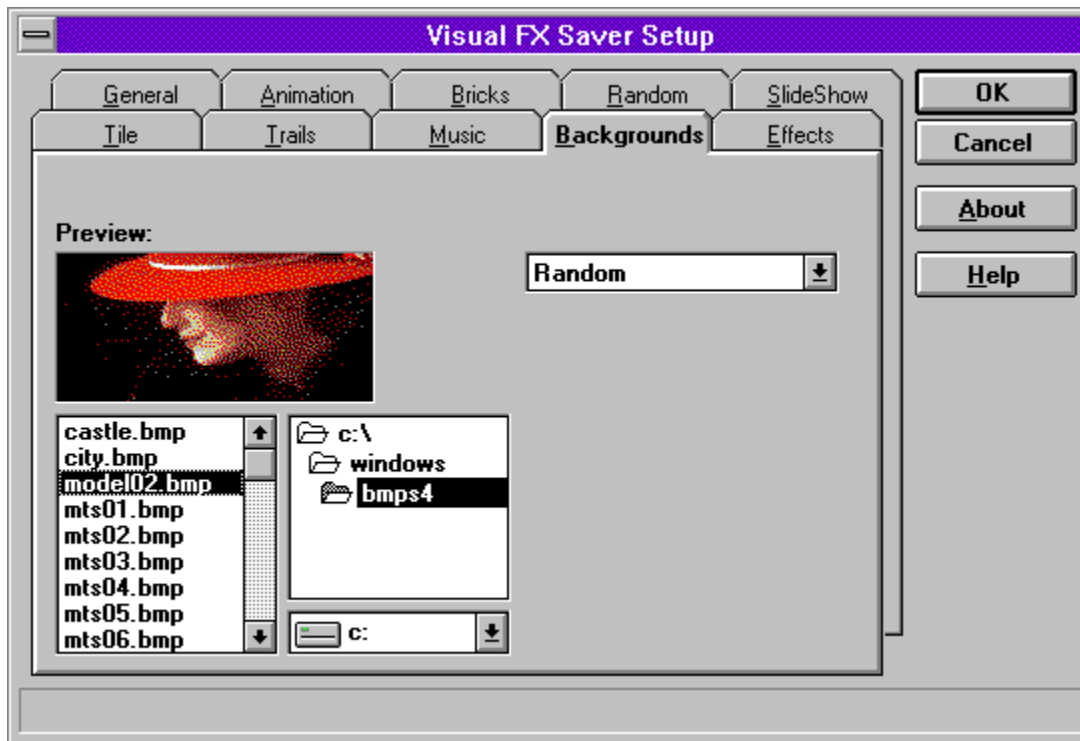
[WhatYouReceive](#)

Click on the About button to view Copyright information.
Can you find the hidden dedication screen?

Available when you enter a message to be left.

Backgrounds

Click on the screen elements below to learn more on how to use the Backgrounds dialog.



The Background tab will take a selection of 'bmp', 'gif', 'pcx', 'tga', and 'tif' files and display them in the background while a Saver Style is in progress.

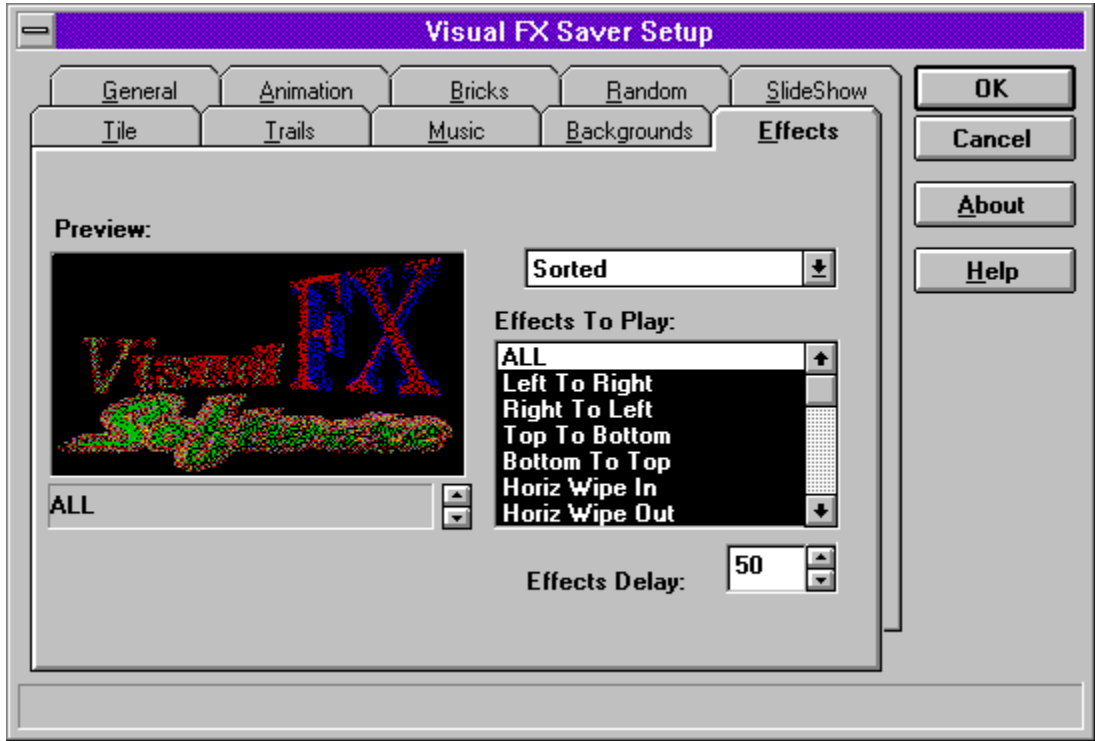
Click on Cancel to discard your Setup Changes.

The Draw Picture/Pop Picture drop down list Lets you choose the manner in which the image is drawn on the screen. An image will either be drawn pixel by pixel or popped on to the screen.

The Draw/Pop Times number is used to determine how many times to draw or pop an image on the screen before clearing it.

Effects

Click on the screen elements below to learn more on how to use the Effects dialog.



The Effects tab will cause your selected backgrounds, animations, and slides to be displayed with a transition.

Click on 'ALL' to select all effects. 'ALL' will change to 'NONE'. Click on 'NONE' to deselect any effects selected. You can select and deselect individual Effects by clicking on the description in the list.

The 'Effects Delay' will slow down the speed of an effect when greater than zero.

The spin button below the preview area allows you to preview what the effect and delay will look like.

Check the Effects check box for effects between display of your animation, or slide files.

Will slow down the speed of an effect when greater than zero.

Click on the spin button to preview the Effects available.

Choose which Effects are to be used. Click on 'ALL' to select all effects. 'ALL' will change to 'NONE'. Click on 'NONE' to deselect any effects selected. You can select and deselect individual Effects by clicking on the description in the list.

Click on the appropriate File Name to Preview.

Click on the Help button to view the Help file.

Check the Labels check box for the display of your animation or slide file name at the bottom of the screen.

Enter a message to be left.

Area where hint messages will appear when you move your mouse.

Click to discard your entered message.

Click to end your screen saving session. The saver will then display the password box if you have selected password protection.

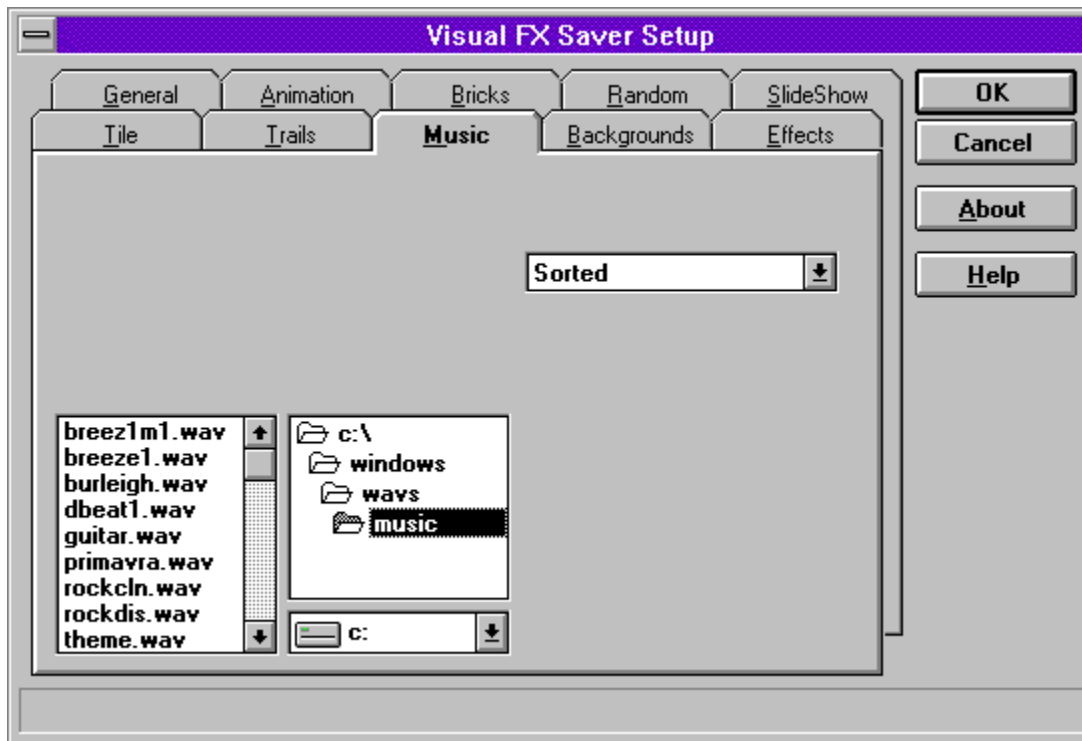
List of messages that have been entered.

Click to save your entered message

Contains your message to anyone who might disturb your screen saver session. Also, doubles as message text display area when you click on the message list.

Music

Click on the screen elements below to learn more on how to use the Music dialog.



The Music tab will take a selection of 'WAV' or 'MID' files and play them while a Saver Style is in progress.

Check the Music check box for continuous music as set up on the Music Tab.

Enter new password if you're creating a password or changing an old password.

Click on OK to Save your Setup.

If you have previously entered a password you must enter it before changing it.

The Single/Random/Sorted drop down list will determine if a single file, a directory - random, or a directory - sorted of files are used.

Click to discard your changes.

Click to save your changes.

Password Protection

Click on the screen elements below to learn more on how to use the Password Protection dialog.



The image shows a standard Windows-style dialog box titled "Change Password". The title bar is purple with a white minus sign on the left. The dialog has a light gray background. It contains three text input fields, each preceded by a label: "Old Password:", "New Password:", and "Retype New Password:". The labels are underlined. At the bottom of the dialog, there are two buttons: "OK" and "Cancel".

Click on the Password Protected check box to activate Password Protection.
Click on the Set Password button to Enter or Change your Password.

The Pause Secs number is used to pause between drawing images. You may enter numbers in tenths of a second or whole seconds.

The Preview area will display Images and Animations when the appropriate File is selected from the File Selector.

Verifies your password.

The Capture Screen/Clear Screen/Show Backgrounds drop down list will capture the current screen, set the screen to black, or create backgrounds.

Check the Splash Screen checkbox if you wish to see the Splash Screen before every screen saving session.

Click on the up or down arrows in the Style Loops number box to set the number of times each style will play.

Click on the list of Styles To Play to select which Styles will be chosen from for your screen saving session.

For example: if you chose Bricks and Random, the first time the screen saver runs it will use the Bricks style. Then the screen saver will use the Random style.

For every Style you select you must set its settings.

Take Messages

Click on the screen elements below to learn more on how to use the Messages dialog.



If you have checked the Take Messages check box on the General tab this dialog will appear whenever a saving session is in progress and the mouse is moved or the keyboard is touched.

Add to an existing script?

<Add To Script>

Animation
<Animation>

Bricks
<Bricks>

FanTaSee screen savers

Screen saver featuring 38 images with over 100 display transitions.

Image/sayings screen savers

Screen saver featuring image with over 100 display transitions and a sayings database.

Movie screen savers

QuickTime movie screen saver.

Poker Party

CD Rom QuickTime movie card game with animation.

Random
<Random>

Screen Saver Engine

Screen saver and delivery system for resale. Delivers single movie or animation with a renameable screen saver.

Screen Strippers

QuickTime movie screen saver featuring positioned movies.

ScreenAmation screen savers

Script creating screen saver

SlideShow
<SlideShow>

The GO EDRIIVE Movie Viewer

Easy to install/use QuickTime movie viewer. Available on CompuServe.

Tile

<Tile>

Trails
<Trails>

Visual FX Screen Saver

Available on CompuServe (GO WINFUN). Multimedia screen saver.

